



NATIONWIDE FAMILY-OWNED MANUFACTURER  
OF KITCHEN & BATH CABINETS SINCE 1937

INTRODUCING  
**GRAY**  
AND  
42" TALL WALL  
CABINETS



FULL LINE 2024



## GRAY

Recessed panel design with Decorative Laminate Veneer (DLV) technology is your key to a kitchen that stands up to life's demands. Our ultra-durable finish with the custom look of paint, but with an easier-to-care-for finish, allowing you to make a mess, wipe it clean, and carry on with life. Soft Close Doors Only. Door Pulls not included.

Gray touch-up Kit available for use on cabinet box only.



*Founded by Dwight Gahm, we are now  
operated by a third generation!*





## DWHITE

Our recessed panel, Shaker style cabinets are available in painted white. This painted wood door style enables a variety of design options with countertops, flooring and decorative backsplashes. Door pulls not included.

**Please refer to the List Price and Specification Booklet (page 11) for Wood Characteristics and Painted Finishes. For more information, see the warranty section at [kitchencompact.com/warranty](http://kitchencompact.com/warranty).**

Watch the DWhite touch-up kit video at [kitchencompact.com/dwkit](http://kitchencompact.com/dwkit).







## GLENWOOD

For those who want a darker, chocolate color, and an up-to-date Shaker style, choose **Glenwood**. The clean, well-defined edges and **recessed panel** doors bring a touch of elegance to your home. Door pulls not included.



*Kitchen Kompact employs nearly 300 workers with an average tenure of 15 years.*





## WARMWOOD

Not as dark as Glenwood, **Warmwood's** chestnut brownish tone, clean lines, and **recessed panel** doors give you another choice in our most popular Shaker style. Door pulls not included.



*Kitchen Kompact is one of the most efficient kitchen cabinet manufacturers in the United States.*





## CHADWOOD

A traditional classic with a golden oak finish, **Chadwood** is right at home in any kitchen. With its *oak recessed panel* doors, **Chadwood** can be designed and accessorized to fit any need, taste or budget. Door pulls not included.



*Our cabinets are proudly made in the USA!*





# The Enduring Beauty of Wood



There's solid wood durability built into every KK cabinet. From the hardwood on the face frames and pine hanging rails to the solid wood elements, each cabinet is built to last.

Note these quality features:

- All frames are built of solid 3/4" hardwoods. Each rail is kiln-dried, joined by mortise and tenon, and then glued for added strength.
- Solid wood toe kicks, 3/4" thick.
- Solid wood hanging strips on wall and base cabinets, located at the top and bottom.
- End panels consist of 3-ply construction, 1/2" thick engineered wood core with hardwood veneers.

All painted and stained cabinets are protected with a durable topcoat or enamel. The result is a surface that is virtually "family-proof," resisting many household chemicals, water, alcoholic beverages, mild acids, and even nail polish.

The result is more than just a kitchen you can cook in — it's a kitchen you can live in at a price you can live with.



And there's more. All Kitchen Kompact cabinets feature plywood drawers as a standard. A front-to-back epoxy-coated drawer system is securely attached to a solid wood strip in the back of the cabinet for stability, and years of smooth operation. We also offer universal design cabinets.

*Kitchen Kompact, Inc. reserves the right to change design, specifications or materials without being obliged to incorporate such changes in products of prior manufacture. The artwork and specifications contained herein are the property of Kitchen Kompact, Inc. and may not be copied or reproduced without the written consent of the company.*

*A physical sample must be viewed for actual color of cabinetry.*

# Custom Touches

**Pantry roll-out trays**



**Base roll-out trays**



**Accessory Match stem glass holder**



**Crown moulding**



**Accessory Match lattice wine rack**



**Accessory Match desk organizer**



**Toe kick & quarter round**



**Rev-A-Shelf undersink drip tray**



**Rev-A-Shelf half moon shelf**



**Rev-A-Shelf pull-out filler**



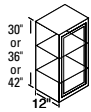
These accessories, available for KK cabinets, give any kitchen a custom look. Ask your dealer for details.

**For additional photos and information, visit:**

[accessorymatch.com](http://accessorymatch.com)  
(260) 495-2501

[rev-a-shelf.com](http://rev-a-shelf.com)  
(800) 626-1126

## WALL CABINETS

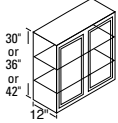


**42" High**

9WXT\* 27WXT  
12WXT\* 30WXT  
15WXT\* 33WXT  
18WXT\* 36WXT  
21WXT\*  
24WXT\*

**36" High**

9WT\* 27WT  
12WT\* 30WT  
15WT\* 33WT  
18WT\* 36WT  
21WT\*  
24WT\*

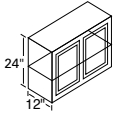


**30" High**

9W\* 27W  
12W\* 30W  
15W\* 33W  
18W\* 36W  
21W\* 42W  
24W\* 48W

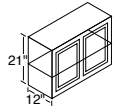
**24" High**

24Z\* 36Z  
30Z



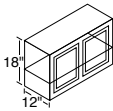
**21" High**

24R\* 36R  
30R



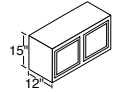
**18" High**

24Y\* 36Y  
30Y



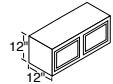
**15" High**

30X 36X  
33X

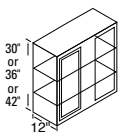


**12" High**

30X12 36X12



## WALL CORNER CABINETS



**42" High**

24WCXT\* 36WCXT\*

**36" High**

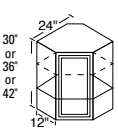
24WCT\* 36WCT\*

All can be pulled 4-1/2".

**30" High**

24WC\* 36WC\*

## ANGLE WALL CABINETS



**42" High**

24AXT

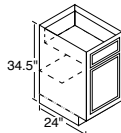
**36" High**

24AT

**30" High**

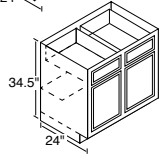
24A

## BASE CABINETS

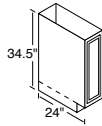


12B\* 30B  
15B\* 33B\*  
18B\* 36B  
21B\* 42B  
24B\* 48B  
27B\*<sup>1</sup>

<sup>1</sup>3" side stiles.

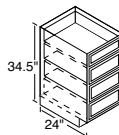


## TRAY CABINET

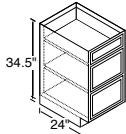


9T

## DRAWER CABINETS



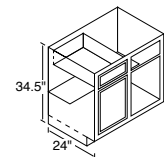
15D 24D  
18D



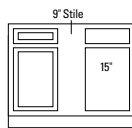
4 Drawer Stack  
Glenwood,  
Warmwood,  
Chadwood

3 Drawer Stack  
DWhite  
Gray

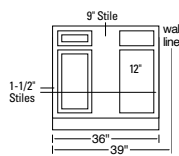
## BASE CORNER CABINETS



39BC  
42BC

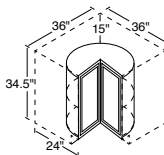


42BC  
Can be pulled to 49".



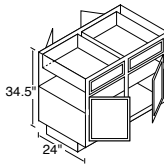
39BC  
Must be pulled 3".  
Can be pulled to 46".

## LAZY SUSAN CORNER CABINET



36LS  
Shipped without  
finished ends.

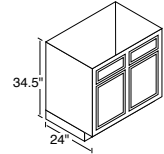
## PENINSULA BASE CABINETS



36B-P  
48B-P  
48BC-P

BC-P indicates Blind  
Corner Peninsula.

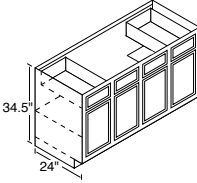
## RANGE & SINK BASE CABINETS



30RBS 36RBS  
33RBS<sup>1</sup> 42RBS

<sup>1</sup>3" side stiles.

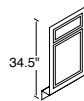
## SINK BASE CABINETS



60SB

No shelf under sink –  
no back.

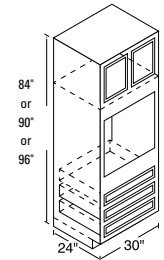
## SINK FRONTS



18SF<sup>1</sup>

<sup>1</sup>Square edge.

## OVEN CABINETS



**96" High**

300UXT

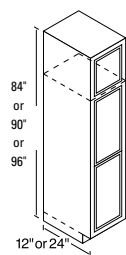
**90" High**

300UT

**84" High**

300U

## BROOM CABINETS



**96" High**

18BRWXT (12" deep)  
18BRBXT (24" deep)  
24BRBXT (24" deep)

**90" High**

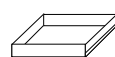
18BRWT (12" deep)  
18BRBT (24" deep)  
24BRBT (24" deep)

**84" High**

18BRW (12" deep)  
18BRB (24" deep)  
24BRB (24" deep)

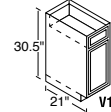
No shelves included  
with broom cabinets.  
**Optional Shelf Kit**  
available.

## ACCESSORIES



Pantry/Base  
Roll-Out Tray  
15BT 18BT 24BT

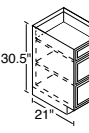
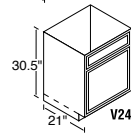
## VANITY CABINETS



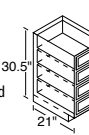
**30.5" Standard**

V12B V36S  
V15D V36SD  
V24S V42S<sup>1</sup>  
V30S V48S<sup>1</sup>

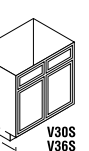
<sup>1</sup>Two outside  
working drawers.



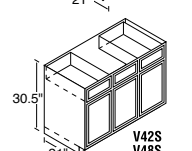
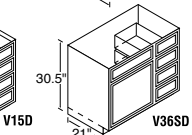
3 Drawer  
Stack  
DWhite  
Gray



4 Drawer  
Stack  
Glenwood,  
Warmwood,  
Chadwood



V30S  
V36S



V42S  
V48S

## TALL VANITY CABINETS

**34.5" Tall**

Tall vanities are only  
available for Glenwood,  
Warmwood, DWhite and  
Gray.

V12BT V36ST  
V15DT V36SDT  
V24ST V42ST<sup>1</sup>  
V30ST V48ST<sup>1</sup>

<sup>1</sup>Two outside  
working drawers.

## ADA ACCESSIBLE CABINETS

ADA accessible cabinets are available, on  
special order, in a limited number of sizes.

### Cabinet Code Descriptions

For ease of ordering, the numerical  
designation indicates the cabinet width,  
the letter identifies the height.

<sup>1</sup>Single door.



Kitchen Compact, Inc.  
911 East 11th St. (47130)  
P.O. Box 868  
Jeffersonville, IN 47131-0868  
(812) 282-6681 Phone  
(812) 282-7880 Fax  
kitchencompact.com



Kitchen Compact is certified under  
the Kitchen Cabinet Manufacturers  
Association's Environmental  
Stewardship Program\*\*.

\*\* This certification has been recognized by the  
National Association of Home Builders' (NAHB)  
with the Green Building Award for Advocate of  
the Year for its environmental and sustainability  
achievements.