

Door Styles

Kitchen Kompact, Inc.
911 East 11th St. (47130)
P.O. Box 868
Jeffersonville, IN 47131-0868
(812) 282-6681 Phone
(812) 282-7880 Fax
kitchenkompact.com

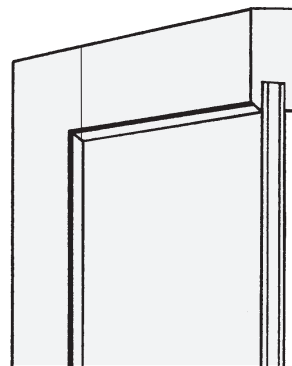


Glenwood and Warmwood: Shaker style door frames are made of solid beech mortised and tenoned. The recessed plywood insert is three-ply with a rotary cut hard maple veneer. Face frames are built using a mixture of solid beech and sycamore. Drawer heads have routed finger pulls.

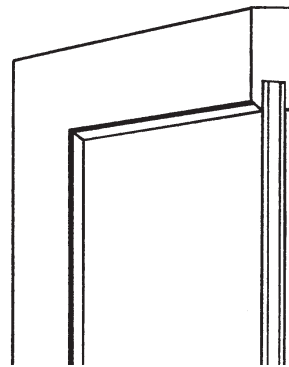
Chadwood: Solid Appalachian oak frames are joined by mortise and tenon. The recessed plywood insert is three-ply with a rotary cut red oak veneer. Drawer heads have routed finger pulls.

DWhite: Painted white shaker style door frames are made of solid beech and/or poplar, mortised and tenoned. The recessed MDF or plywood insert is a three-ply with a rotary cut hard maple veneer. Drawer heads have routed finger pulls.

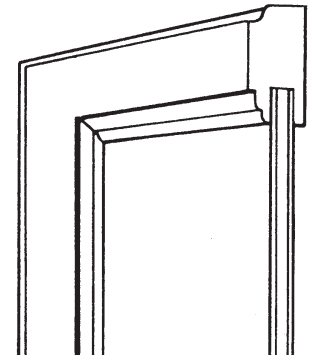
Gray: Decorative Laminate Veneer (DLV) doors are a polypropylene material over MDF. The DLV doors are manufactured using a 5 piece coped joint construction.



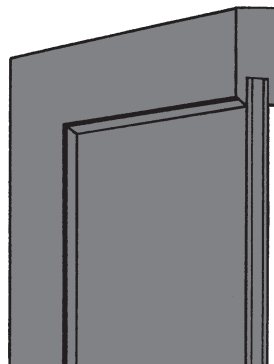
Gray



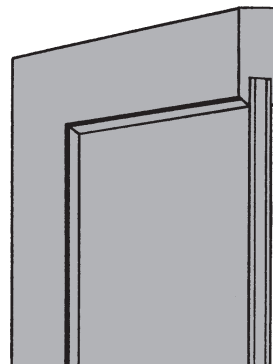
DWhite



Chadwood Oak



Glenwood



Warmwood



Wall Cabinets

Kitchen Kompact, Inc.
911 East 11th St. (47130)
P.O. Box 868
Jeffersonville, IN 47131-0868
(812) 282-6681 Phone
(812) 282-7880 Fax
kitchenkompact.com



Frames: All frames are built of solid 3/4" hardwoods. Each rail is kiln-dried, joined by mortise and tenon, then glued for added strength.

End Panels: End panels are wood veneered, 1/2" thick engineered wood core plywood, fastened to front frame with tongue-in-groove construction.

Backs: 1/8" hardboard recessed in sides.

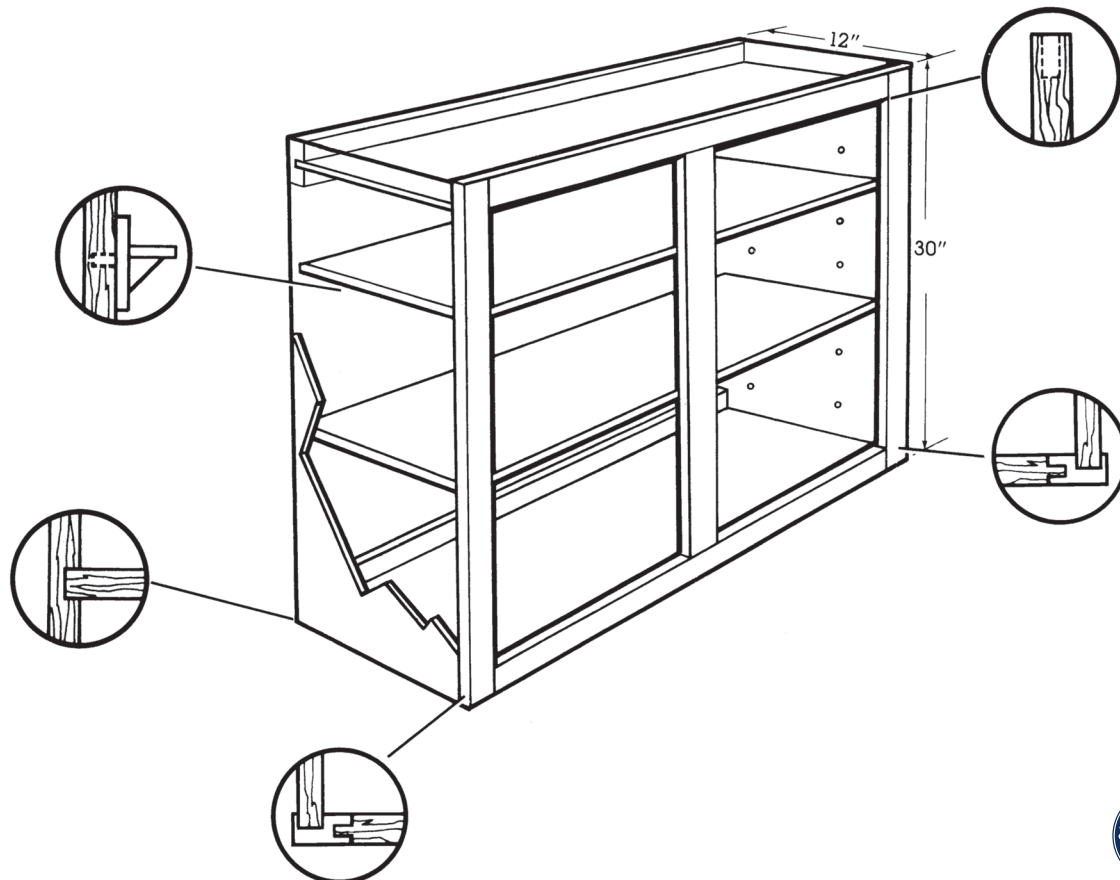
Tops & Bottoms: 3/16" hardboard dadoed into sides, interlocked into hanging rails of all wall units, and secured with an adhesive for added strength.

Hanging Rails: Solid wood, 3/4" x 2-5/8", located at top and bottom.

Shelves: All wall cabinets feature adjustable shelves. A selection of six different heights is built into each 30" high and taller wall cabinet. On 2-door wall units, the center 3" stile is used for center support of adjustable shelves. It is recommended that a 1/4" hole be drilled in the back for additional center support. The extra shelf clip is provided. Shelves are 1/2" engineered wood, with rounded front edge and printed wood grain.

Hardware: Chadwood, Glenwood, Warmwood and DWhite feature concealed self-closing hinges. Gray features concealed soft-closing hinges — no door pulls included.

Finish: A 4-step process is applied to the exterior finish of Glenwood, Warmwood, and Chadwood: Stain, Sealer, Sanding, and Catalyzed Top Coat. This finish is resistant to household chemicals such as water, beverages, mild acids — even nail polish. A 3-step process is applied to the exterior finish of DWhite: Primer (2 coats), Sanding, and Enamel. Gray: A 3-step process is applied to the exterior finish of the gray cabinet box: Primer, Sanding, and Enamel. The Gray Door and Drawer Front is a Decorative Laminate Veneer.



Base Cabinets

Kitchen Kompact, Inc.
911 East 11th St. (47130)
P.O. Box 868
Jeffersonville, IN 47131-0868
(812) 282-6681 Phone
(812) 282-7880 Fax
kitchenkompact.com



Frames: All frames are built of solid 3/4" hardwoods. Each rail is kiln-dried, joined by mortise and tenon, then glued for added strength.

End Panels: End panels are wood veneered, 1/2" thick engineered wood core plywood, fastened to front frame with tongue-in-groove construction.

Backs: 1/8" hardboard recessed in sides.

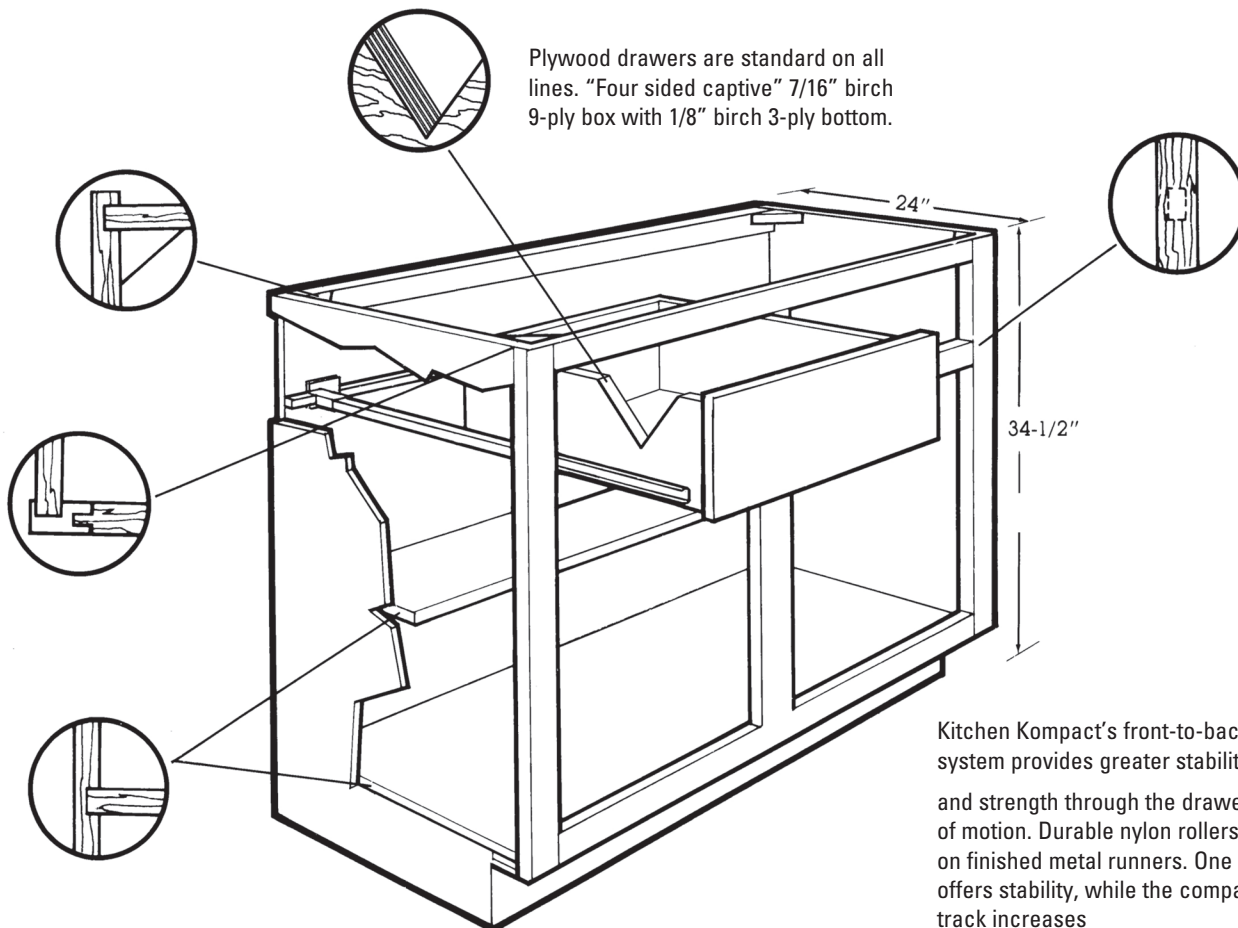
Tops & Bottoms: 3/16" hardboard dadoed into sides, interlocked into hanging rails of all wall units, and secured with an adhesive for added strength.

Hanging Rails: Solid wood, 3/4" x 2-5/8", located at top and bottom.

Shelves: All wall cabinets feature adjustable shelves. A selection of six different heights is built into each 30" high and taller wall cabinet. On 2-door wall units, the center 3" stile is used for center support of adjustable shelves. It is recommended that a 1/4" hole be drilled in the back for additional center support. The extra shelf clip is provided. Shelves are 1/2" engineered wood, with rounded front edge and printed wood grain.

Hardware: Chadwood, Glenwood, Warmwood and DWhite feature concealed self-closing hinges. Gray features concealed soft-closing hinges — no door pulls included.

Finish: A 4-step process is applied to the exterior finish of Glenwood, Warmwood, and Chadwood: Stain, Sealer, Sanding, and Catalyzed Top Coat. This finish is resistant to household chemicals such as water, beverages, mild acids — even nail polish. A 3-step process is applied to the exterior finish of DWhite: Primer (2 coats), Sanding, and Enamel. Gray: A 3-step process is applied to the exterior finish of the gray cabinet box: Primer, Sanding, and Enamel. The Gray Door and Drawer Front is a Decorative Laminate Veneer.



Lasy Susan

Kitchen Kompact, Inc.
911 East 11th St. (47130)
P.O. Box 868
Jeffersonville, IN 47131-0868
(812) 282-6681 Phone
(812) 282-7880 Fax
kitchenkompact.com



Frames: All frames are built of solid 3/4" hardwoods. Each rail is kiln-dried, joined by mortise and tenon, then glued for added strength.

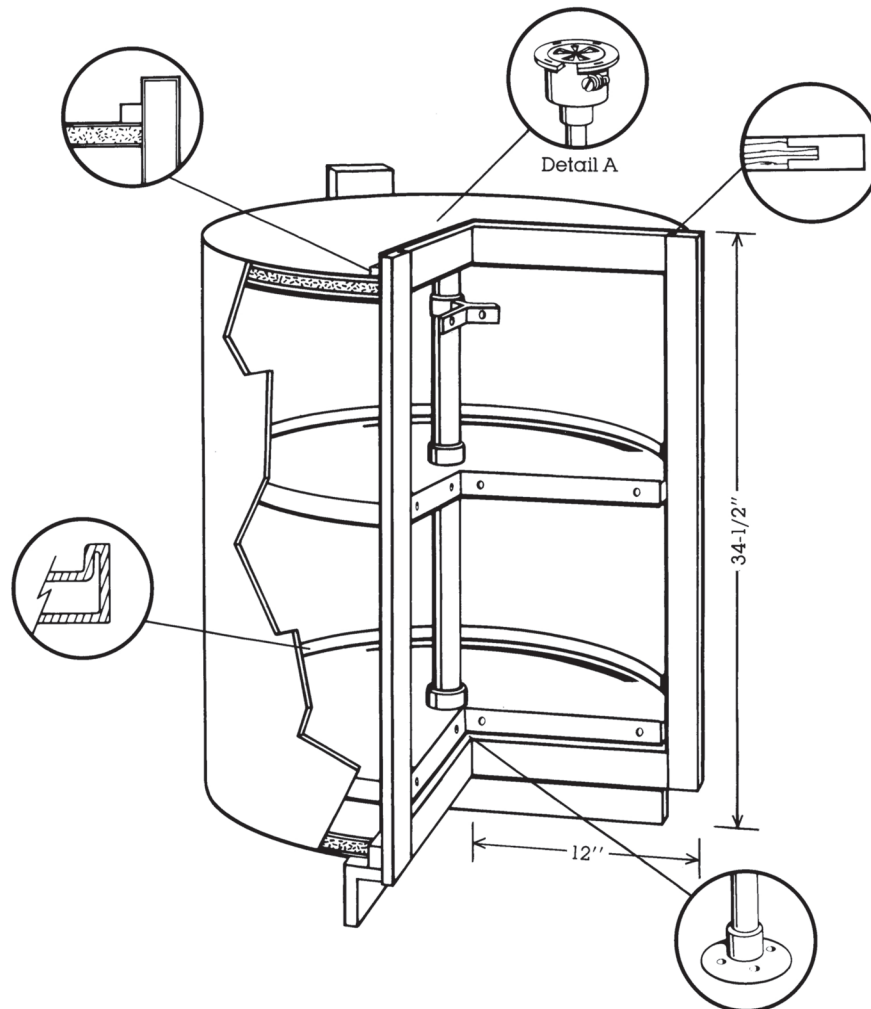
End Panels: Not required unless cabinet is used at the end of a run.

Toe Kick: 3/4" pine.

Shelf: High impact polystyrene shelves have internal struts for maximum strength.

Hardware: Engineered with an adjustable mechanism (detail A) for aligning the vertical and rotational position of cabinet doors within the cabinet frame. The nylon gear and cam mechanism requires no lubrication..

Finish: A 4-step process is applied to the exterior finish of Glenwood, Warmwood, and Chadwood: Stain, Sealer, Sanding, and Catalyzed Top Coat. This finish is resistant to household chemicals such as water, beverages, mild acids – even nail polish. A 3-step process is applied to the exterior finish of DWhite: Primer (2 coats), Sanding, and Enamel. Gray: A 3-step process is applied to the exterior finish of the gray cabinet box: Primer, Sanding, and Enamel. The Gray Door and Drawer Front is a Decorative Laminate Veneer.



ADA Accessible Cabinets

Kitchen Kompact, Inc.
 911 East 11th St. (47130)
 P.O. Box 868
 Jeffersonville, IN 47131-0868
 (812) 282-6681 Phone
 (812) 282-7880 Fax
kitchenkompact.com

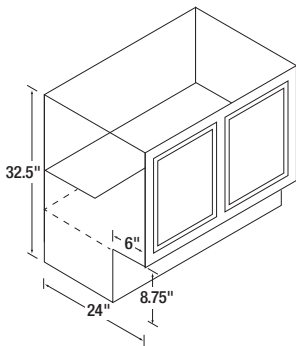
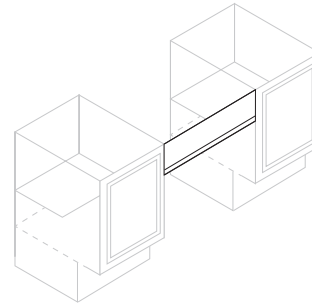
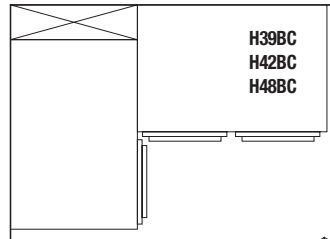


Kitchen Kompact offers 32-1/2" high base cabinets to help comply with ADA (Americans with Disabilities Act) requirements. Such cabinets are especially important for multi-family projects subject to HUD and FHA funding. Kitchen Kompact will only provide ADA accessible cabinets on multi-family projects where the ADA accessible cabinets are 10% or less of the entire project. These cabinets are special order and are available in all door styles. Please allow a minimum of two weeks for delivery. **Price is plus 15% over standard base cabinet.**

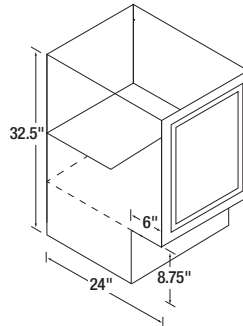
Handicapped Design Cabinets

Handicapped design cabinets include:

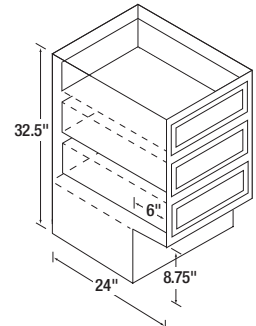
- Height of 32.5"
- Toe Kick is 8.75"
- No drawers



H30B
 H36B
 H42B
 H48B



H12B
 H15B
 H18B
 H21B
 H24B

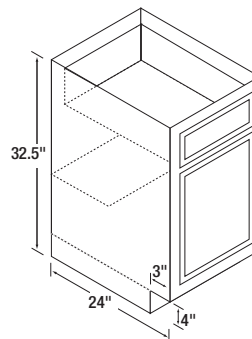
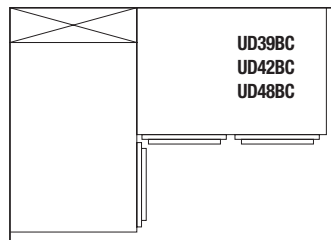


H15D
 H18D
 H24D

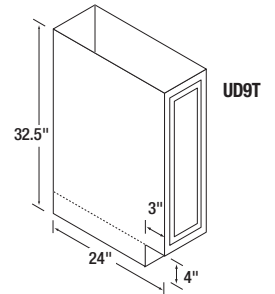
Universal Design Cabinets

Universal design cabinets include:

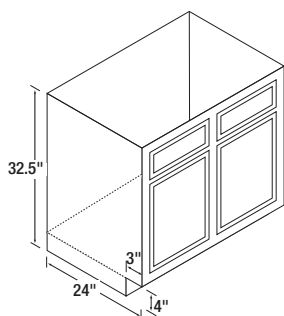
- Height of 32.5"
- Standard 4" Toe Kick
- Functioning drawers



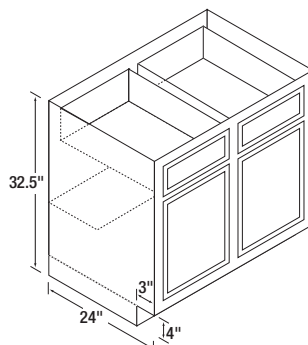
UD12B
 UD15B
 UD18B
 UD21B
 UD24B



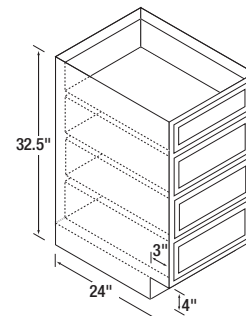
UD9T



UD30RBS
 UD36RBS
 UD42RBS



UD30B
 UD36B
 UD42B
 UD48B



UD15D
 UD18D
 UD24D

