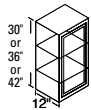


WALL CABINETS

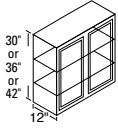


42" High

9WXT* 27WXT
12WXT* 30WXT
15WXT* 33WXT
18WXT* 36WXT
21WXT*
24WXT*

36" High

9WT* 27WT
12WT* 30WT
15WT* 33WT
18WT* 36WT
21WT*
24WT*

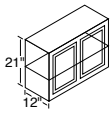


30" High

9W* 27W
12W* 30W
15W* 33W
18W* 36W
21W* 42W
24W* 48W

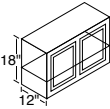
21" High

24R* 36R
30R



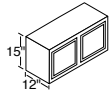
18" High

24Y* 36Y
30Y



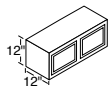
15" High

30X 36X
33X

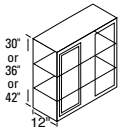


12" High

30X12
36X12



WALL CORNER CABINETS



42" High

24WCXT* 36WCXT*

36" High

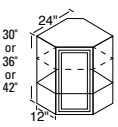
24WCT* 36WCT*

30" High

24WC* 36WC*

All can be pulled 4-1/2".

ANGLE WALL CABINETS



42" High

24AXT

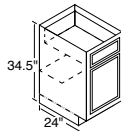
36" High

24AT

30" High

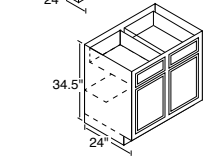
24A

BASE CABINETS

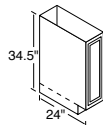


12B* 30B
15B* 33B*
18B* 36B
21B* 42B
24B* 48B
27B*¹

¹3" side stiles.

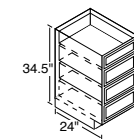


TRAY CABINET



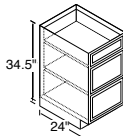
9T

DRAWER CABINETS



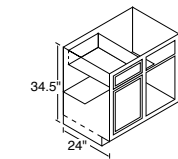
15D 24D
18D

4 Drawer Stack
Glenwood,
Warmwood
Chadwood

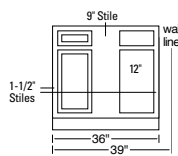


3 Drawer Stack
DWhite ONLY

BASE CORNER CABINETS



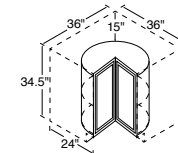
39BC
42BC



42BC
Can be pulled to 49".

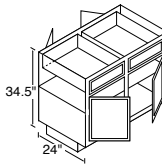
39BC
Must be pulled 3".
Can be pulled to 46".

LAZY SUSAN CORNER CABINET



36LS
Shipped without
finished ends.

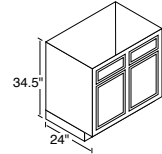
PENINSULA BASE CABINETS



36B-P
48B-P
48BC-P

BC-P indicates Blind
Corner Peninsula.

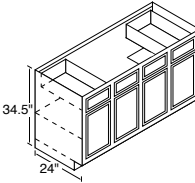
RANGE & SINK BASE CABINETS



30RBS 36RBS
33RBS¹ 42RBS

¹3" side stiles.

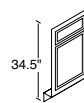
SINK BASE CABINETS



60SB

No shelf under sink –
no back.

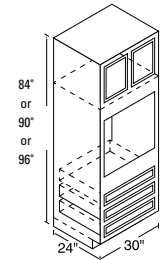
SINK FRONTS



18SF¹

¹Square edge.

OVEN CABINETS



96" High

300UXT

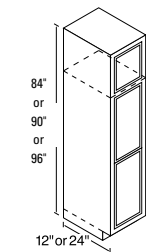
90" High

300UT

84" High

300U

BROOM CABINETS



96" High

18BRWXT (12" deep)

18BRBXT (24" deep)

24BRBXT (24" deep)

90" High

18BRWT (12" deep)

18BRBT (24" deep)

24BRBT (24" deep)

84" High

18BRW (12" deep)

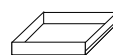
18BRB (24" deep)

24BRB (24" deep)

No shelves included
with broom cabinets.

Optional Shelf Kit
available.

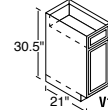
ACCESSORIES



Pantry/Base
Roll-Out Tray

15BT 18BT 24BT

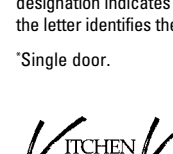
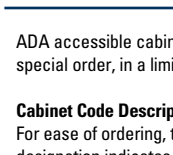
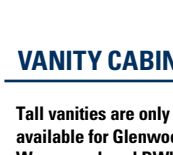
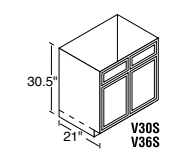
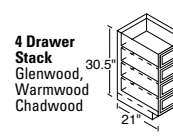
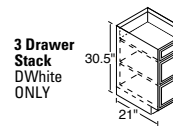
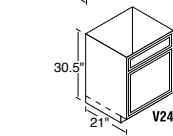
VANITY CABINETS



30.5" Standard

V12B V36S
V15D V36SD
V24S V42S¹
V30S V48S¹

¹Two outside
working drawers.



VANITY CABINETS

34.5" Tall

Tall vanities are only
available for Glenwood,
Warmwood, and DWhite.

V12BT V36ST
V15DT V36SDT
V24ST V42ST¹
V30ST V48ST¹

¹Two outside
working drawers.

ADA ACCESSIBLE CABINETS

ADA accessible cabinets are available, on
special order, in a limited number of sizes.

Cabinet Code Descriptions

For ease of ordering, the numerical
designation indicates the cabinet width,
the letter identifies the height.

¹Single door.



Kitchen Compact, Inc.
911 East 11th St. (47130)
P.O. Box 868
Jeffersonville, IN 47131-0868
(812) 282-6681 Phone
(812) 282-7880 Fax
kitchencompact.com



Kitchen Compact is certified under
the Kitchen Cabinet Manufacturers
Association's Environmental
Stewardship Program**.

** This certification has been recognized by the
National Association of Home Builders (NAHB)
with the Green Building Award for Advocate of
the Year for its environmental and sustainability
achievements.

Kitchen Compact, Inc. reserves the right to change design, specifications or materials
without being obliged to incorporate such changes in products of prior manufacture.
The artwork and specifications contained herein are the property of Kitchen Compact,
Inc. and may not be copied or reproduced without the written consent of the company.
A physical sample must be viewed for actual color of cabinetry.