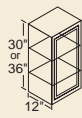
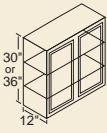


**WALL Cabinets**



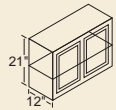
**36" High**

- 9WT 27WT
- 12WT\* 30WT
- 15WT\* 33WT
- 18WT\* 36WT
- 21WT\* 39WT
- 24WT\*



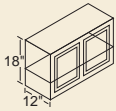
**30" High**

- 9W\* 27W
- 12W\* 30W
- 15W\* 33W
- 18W\* 36W
- 21W\* 42W
- 24W\* 48W



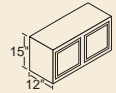
**21" High**

- 24R\* 36R
- 30R



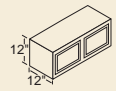
**18" High**

- 24Y\* 36Y
- 30Y



**15" High**

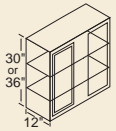
- 30X 36X
- 33X



**12" High**

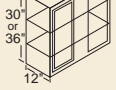
- 30X12
- 36X12

**WALL CORNER Cabinets**



**36" High**

- 24WCT\* 36WCT\*

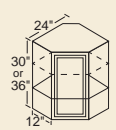


**30" High**

- 24WC\* 42WC
- 36WC\*

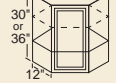
All can be pulled 4-1/2".

**ANGLE WALL Cabinets**



**36" High**

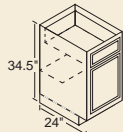
- 24AT



**30" High**

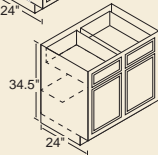
- 24A

**BASE Cabinets**

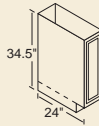


- 12B\* 30B
- 15B\* 33B<sup>†</sup>
- 18B\* 36B
- 21B\* 42B
- 24B\* 48B
- 27B\*<sup>†</sup>

<sup>†</sup> 3" side stiles.

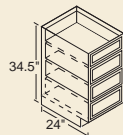


**TRAY Cabinet**



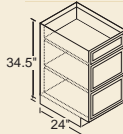
9T

**DRAWER Cabinets**



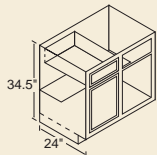
- 15D 24D
- 18D

4 Drawer Stack  
Glenwood,  
Warmwood,  
Chadwood

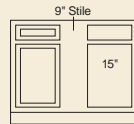


3 Drawer Stack  
DWhite ONLY

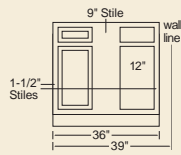
**BASE CORNER Cabinets**



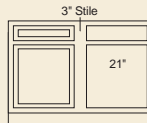
- 39BC
- 42BC



42BC  
Can be pulled to 49".

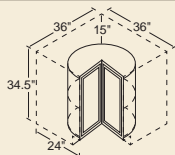


39BC  
Must be pulled 3".  
Can be pulled to 46".



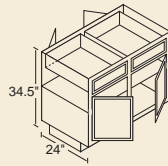
48BC  
Can be pulled to 49".

**LAZY SUSAN CORNER Cabinet**



36LS  
Shipped without  
finished ends.

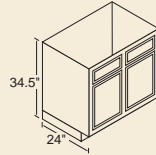
**PENINSULA BASE Cabinets**



- 36B-P
- 48B-P
- 48BC-P

**BC-P** indicates Blind  
Corner Peninsula.

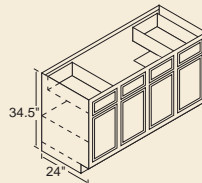
**RANGE & SINK BASE Cabinets**



- 30RBS 36RBS
- 33RBS<sup>†</sup> 42RBS

<sup>†</sup> 3" side stiles.

**SINK BASE Cabinets**



60SB

No shelf under sink –  
no back.

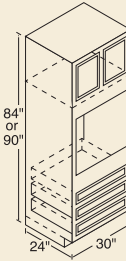
**SINK FRONTS**



18SF<sup>†</sup>

<sup>†</sup> Square edge.

**OVEN Cabinets**



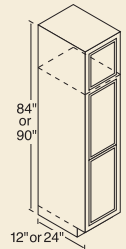
**90" High**

300T

**84" High**

300U

**BROOM Cabinets**



**90" High**

- 18BRWT (12" deep)
- 18BRBT (24" deep)
- 24BRBT (24" deep)

**84" High**

- 18BRW (12" deep)
- 18BRB (24" deep)
- 24BRB (24" deep)

No shelves included  
with broom cabinets.  
**Optional Shelf Kit**  
available.

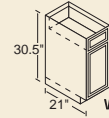
**ACCESSORIES**



Pantry/Base  
Roll-Out Tray  
15BT 18BT 24BT

**VANITY Cabinets**

**30.5" Standard**

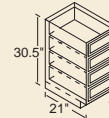


V12B

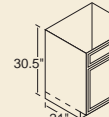
- V12B V36SD
- V15D V42S<sup>†</sup>
- V24S V48S<sup>†</sup>
- V30S V30KH<sup>††</sup>
- V36S

<sup>†</sup> Two outside working  
drawers.

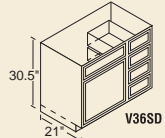
<sup>††</sup> Can be cut down 3"  
on each side.



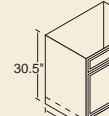
V15D



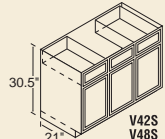
V24S



V36SD



V30S



V42S  
V48S

V30KH

**VANITY Cabinets**

**34.5" Tall**

Tall vanities are only  
available for Glenwood  
and Warmwood.

- V12BT V36SDT
- V15DT V42ST<sup>†</sup>
- V24ST V48ST<sup>†</sup>
- V30ST
- V36ST

All Standard  
and Tall Vanities  
21" Deep

<sup>†</sup> Two outside working  
drawers.

**ADA ACCESSIBLE Cabinets**

ADA accessible cabinets are available, on  
special order, in a limited number of sizes.

**Cabinet Code Descriptions**

For ease of ordering, the numerical designation  
indicates the cabinet width, the letter identifies  
the height.

<sup>\*</sup> Single door.



Kitchen Kompact, Inc.  
911 East 11th St. (47130)  
P.O. Box 868  
Jeffersonville, IN 47131-0868  
(812) 282-6681 Phone  
(812) 282-7880 Fax

[kitchenkompact.com](http://kitchenkompact.com)



Kitchen Kompact is certified under  
the Kitchen Cabinet Manufacturers  
Association's Environmental  
Stewardship Program™.

<sup>™</sup> This certification has been recognized by the  
National Association of Home Builders (NAHB)  
with the Green Building Award for Advocate of the Year  
for its environmental and sustainability achievements.